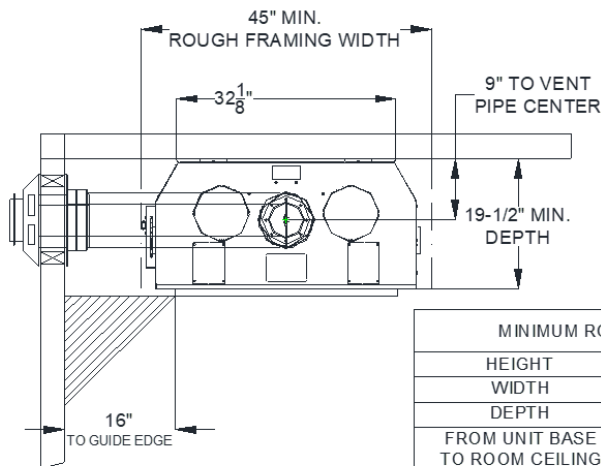
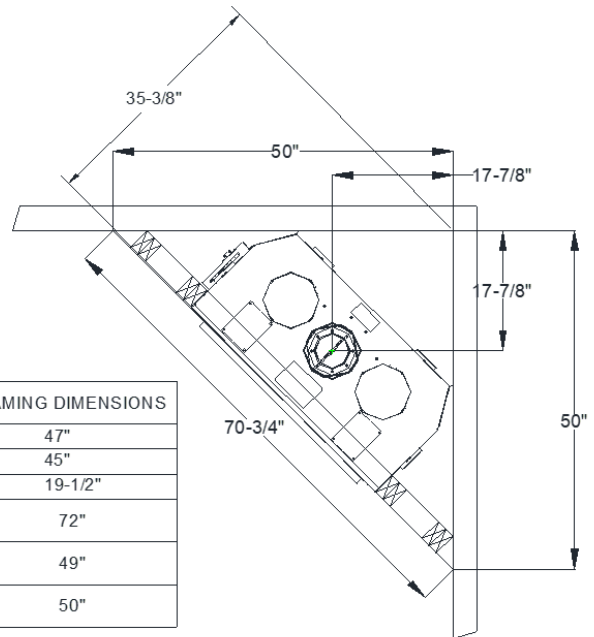


FV41 DECOR AND FV41 TIMBERLINE SPECIFICATIONS



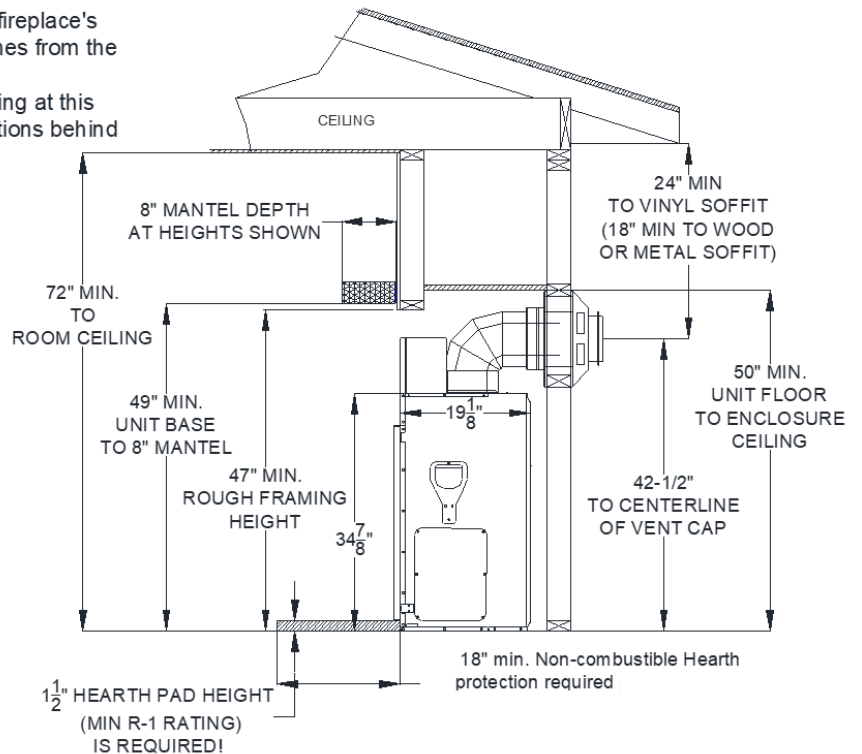
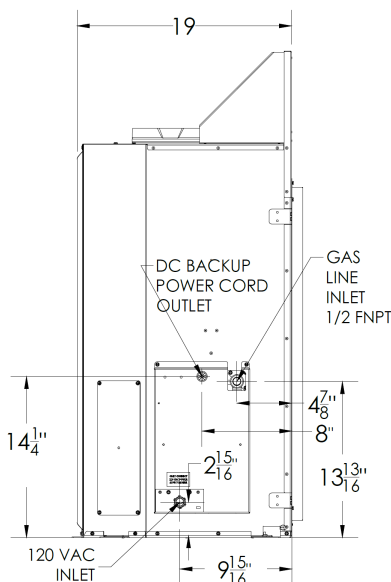
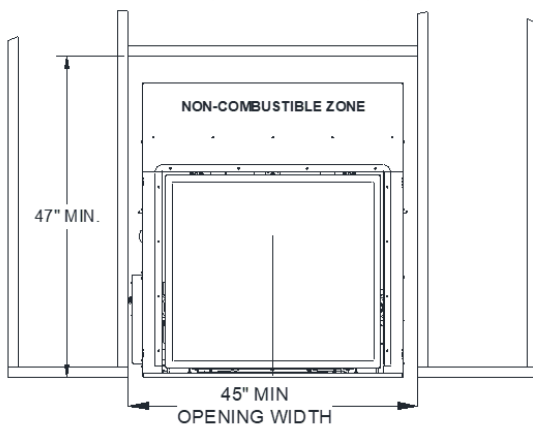
| MINIMUM ROUGH FRAMING DIMENSIONS | |
|--|---------|
| HEIGHT | 47" |
| WIDTH | 45" |
| DEPTH | 19-1/2" |
| FROM UNIT BASE TO ROOM CEILING | 72" |
| FROM UNIT BASE TO 8" MANTEL | 49" |
| FROM UNIT BASE TO UNIT ENCLOSURE CEILING | 50" |



ADJACENT WALLS:

A wall perpendicular to and in front of this fireplace's glass door surface must be at least 16 inches from the side edges of the facing guide.

A wall at 45° to the glass surface and starting at this Fireplace's outer edge is permitted. Projections behind this wall (in shaded area) are permitted.



CAUTION: The distance from floor level to the centerline of the vent cap is given based on Simpson DuraVent GS components. If using vent components of other brands do not assume that the measurement given here is applicable. Verify the distance to centerline of ventcap by measuring the components you will be using.

NOTE: For every 1" this fireplace is raised off the floor, the non-combustible hearth protection pad may be reduced by 2". If this fireplace is raised off the floor more than 6", No hearth protection pad is required.